

PFI-60 & PFI-120

275 hp (205 kW) & 560 hp (420 kW)

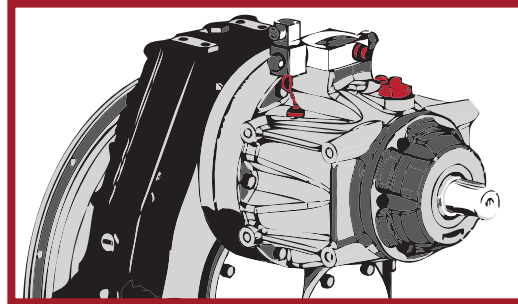


ADVANTAGES

- Integral bi-directional gerotor oil pump
- Integral pressure relief valve
- SAE pump mount or keyed shaft output

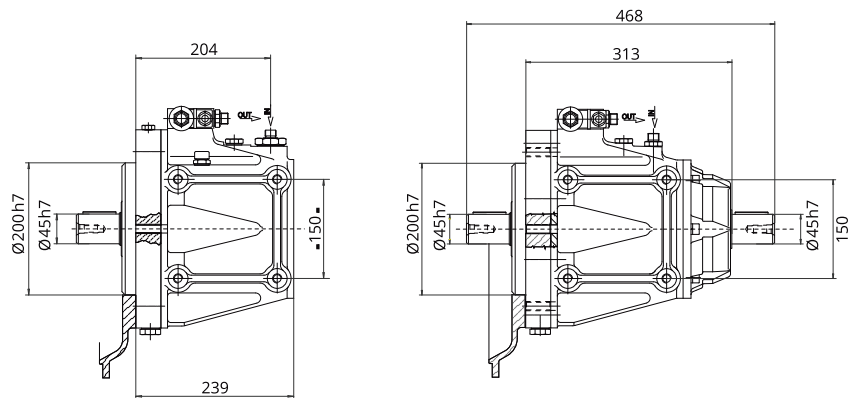
DESIGNED FOR

- Direct engine mounting or mounted to AM pump drive
- Compact applications



PFI-60

- 275 hp (205 kW) capability
- 12 or 24 Volt DC solenoid
- SAE 3, 2 and 1 input housing configurations
- 1000kg side-load capability
- SAE "A" through SAE "C" pads/splines



PFI-120

- 560 hp (420 kW) capability
- 12 or 24 Volt DC solenoid
- SAE 3, 2 and 1 input housing configurations
- 1000kg side load capability
- SAE "A" through SAE "C" pads/splines

