

Spicer® C9000 Series Torque Converter

224 to 410 kW (300 to 550 hp)

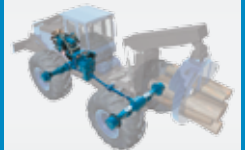
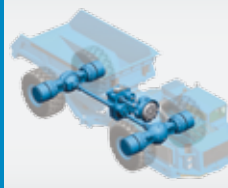
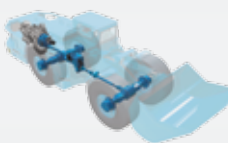
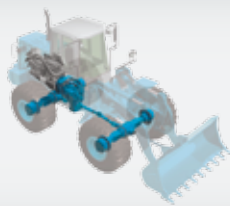


SPICER®

Off-Highway Systems



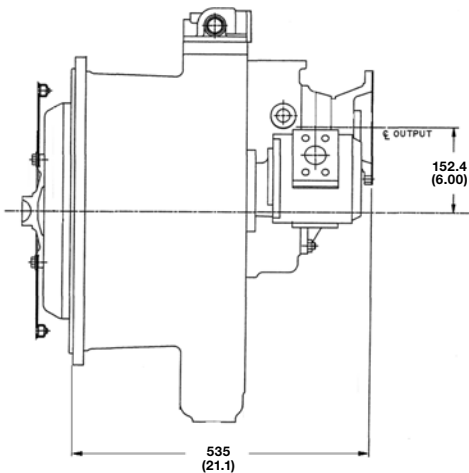
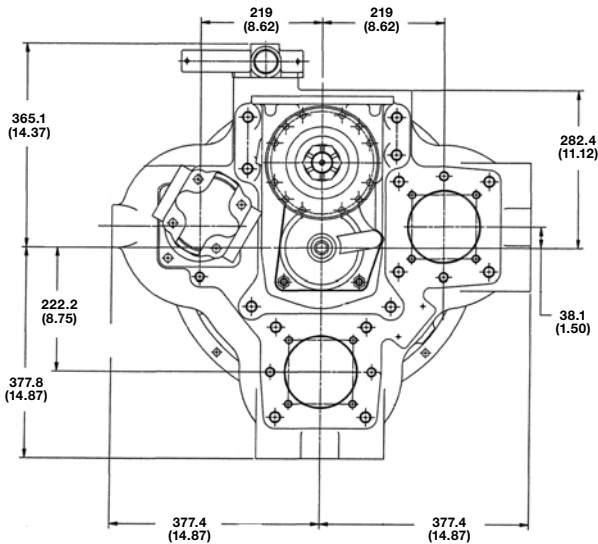
Delivers optimum engine power for construction, logging, mining, material-handling, and other industrial applications.



Spicer® C9000 Series Torque Converter

224 to 410 kW (300 to 550 hp)

The Spicer® C9000 Series torque converter is designed for vehicles requiring higher pump drive ratings and an expanded pump drive center distance. The basic design provides two SAE “C” pump drives with the housing casting capable of being machined to SAE “D” size pump openings. The C9000 converter is matched to the 8000 and 9000 Series transmissions and is available with engine and output speed sensors.



Converter

Flywheel Housing Size	SAE No. 1
Flex Plate Drive Bolt Circle Options mm (in)	381, 406.4, 431.8 (15.00, 16.00, 17.00)
Input Power kW (hp)	224 to 410 (300 to 550)
Torque Capacity Nm (ft-lb)	1898 (1400)
Input Maximum (RPM)	2700
Torque Converter Diameter mm (in)	381, 406.4 (15, 16)
Stall Torque Ratio Options	1.78 up to 3.05

Pump Drive

SAE Mounting Size	SAE Spline
“C” – 2- or 4-Bolt	14-Tooth, 12/24 Pitch
“CC” – 2- or 4-Bolt	17-Tooth, 12/24 Pitch
“D” – 4-Bolt	13-Tooth, 8/16 Pitch
Pump Drive Ratings Nm (ft-lb)	Maximum Continuous – 675 (500)
	Maximum Intermittent – 945 (700)
Pump Drive Ratio and Rotation	Standard: 0.944:1 Overdrive – Rotates Opposite Engine

Flanges

Spicer	1600, 1700, 1600M, 1800
Mechanics	6C, 7C, 8C, 8.5C, 9C
GWB	387/30, 387/40, 155KV70, 180KV70

Weight

Without Lock-up kg (lb)	345 to -364 (760 to 800)
With Lock-up kg (lb)	363 to 382 (800 to 840)

Features and Benefits

- Offset drive
- SAE “A”, “B” and “C” pump mountings
- 3 plate lock-up
- Engine inductive sensor
- Output inductive sensor
- Flex plate drive
- SAE flywheel housing 1
- High operating efficiency
- Engineered specifically for off-highway equipment
- Optimized cast blading results in high efficiencies
- Flexible installation

Sales Office – Italy
Zona Industriale
Arco, Italy 38062

www.dana.com/offhighway



SPICER®

Off-Highway Systems

Application Policy

Capacity ratings, features, and specifications vary depending upon the model and type of service. Application approvals must be obtained from Dana; contact your representative for application approval. We reserve the right to change or modify our product specifications, configurations, or dimensions at any time without notice.