

**MODEL SR3E  
REDUCTION GEAR**

Model SR3E is a heavy duty reduction gear having engine rotation that includes a clutch and mounts to an engine for a compact package with proper alignment. The gears are helical and carburized for ultimate strength and endurance. Gears are designed per AGMA specifications. The bearings are tapered roller and the case is heavy cast iron. A wide variety of ratios are available.

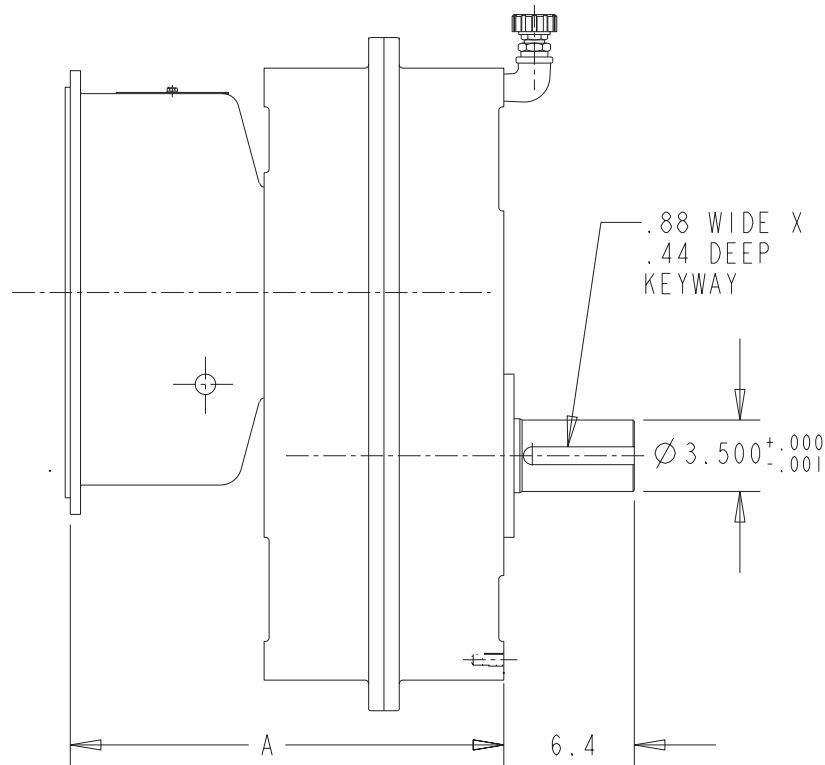
<b>CAPACITY (nominal input torque):</b>	900 lb. ft.
<b>MAXIMUM INPUT SPEED:</b>	3000 RPM
<b>RATIOS:</b>	1.20, 1.38, 1.59, 1.84, 2.03, 2.52, 3.00
<b>BELL HOUSINGS:</b>	SAE #1, #2, #0
<b>CLUTCHES:</b>	SP211, SP114, SP214, SP314, SP218
<b>OUTPUT SHAFT:</b>	3.500" diameter, 5" long 7/8 x 7/16 keyway
<b>REAR SUPPORT:</b>	4 holes 5/8-11 on rear cover for customer's support plate
<b>LUBRICATION:</b>	Splash
<b>WEIGHT:</b>	975 lbs

07/31/03

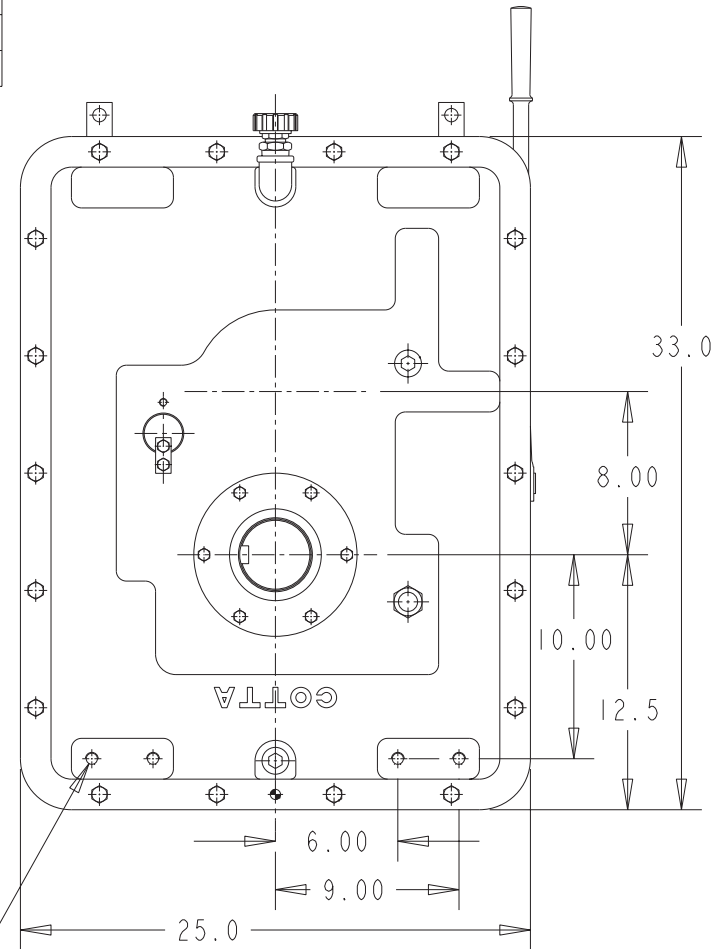
# MODEL SR3E REDUCTION GEAR

SAE BELLHSG #	DIM A
#3	19.38
#2	19.38
#1	21.25
#1 (DEEP)	22.75

OUTPUT CAN BE ORIENTED  
AT 3, 6, 9, OR 12 O'CLOCK POSITION  
CONTACT COTTA FOR MOUNTING HOLE LOCATION



5/8-11 UNC THREAD  
TYP (4)  
FOR GEARBOX MOUNTING



DO NOT USE DIMENSIONS ON THIS DRAWING FOR  
INSTALLATIONS, USE CERTIFIED PRINT PROVIDED  
WITH ORDERS.