

**MODEL GR16A
REDUCTION GEAR**

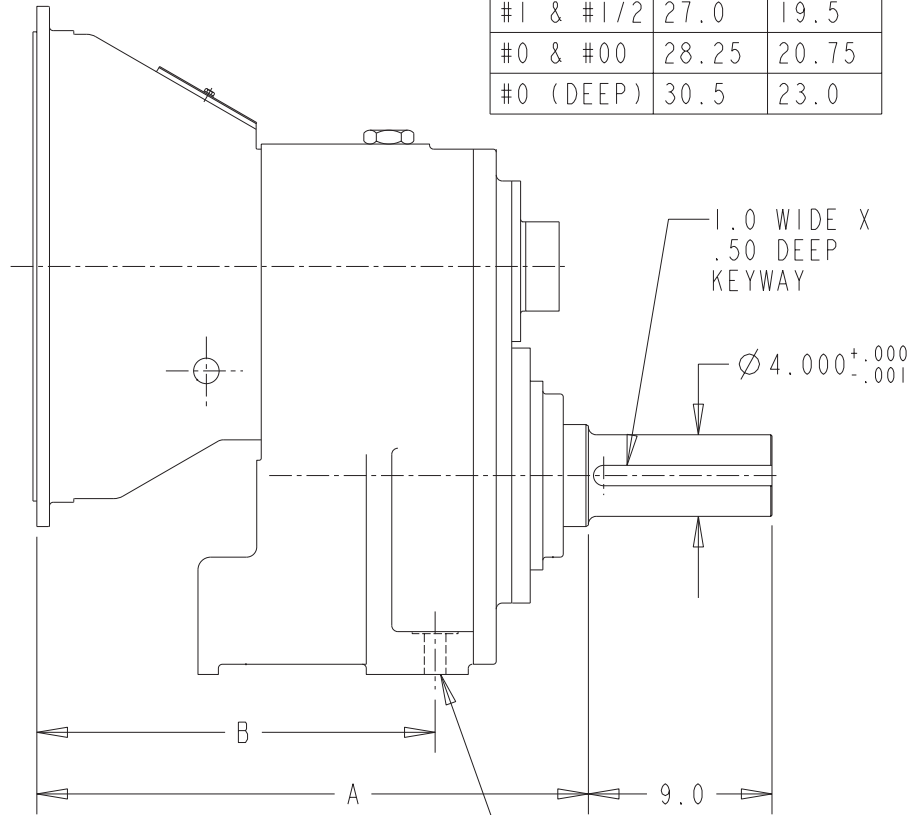
Model GR16A is a heavy duty anti-engine rotation reduction gear. A clutch and bell housing is included for mounting to an engine for a compact package with proper alignment. The gears are helical and carburized for ultimate strength and endurance. Gears are designed per AGMA specifications. The bearings are anti-friction and the case is cast iron. A wide variety of ratios are available.

CAPACITY (Maximum input torque):	1650 lb. ft.
MAXIMUM INPUT SPEED:	2200 RPM
RATIOS:	1.50, 1.60, 1.72, 1.85, 2.0, 2.16, 2.33, 2.52, 2.75, 3.00
BELL HOUSINGS:	SAE #1, #1/2, #0, #00
CLUTCHES:	IBF214, SP314, SP218, SP318 18" rubber block drive
OUTPUT SHAFT:	4.000" diameter, 9" long with 1" x 1/2" keyway
REAR SUPPORT:	Two mounting feet provided
LUBRICATION:	Lube pump furnished 32 pints sump capacity
COOLING:	A heat exchanger furnished.
WEIGHT:	1380 pounds

07/31/03

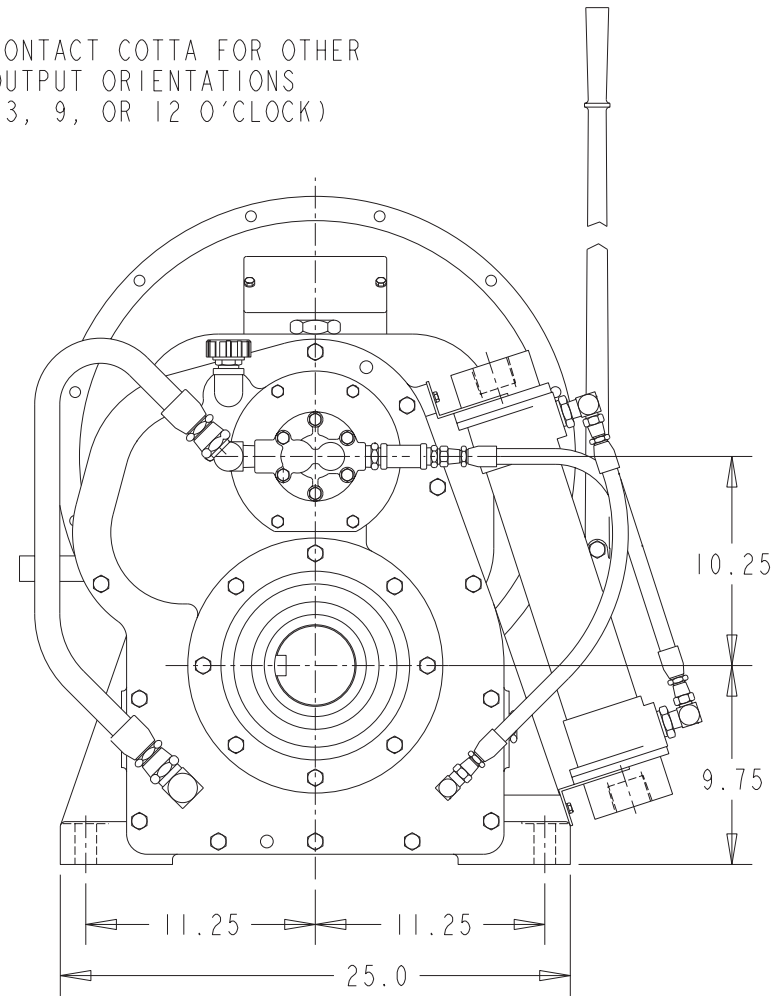
MODEL GR16A REDUCTION GEAR

BELLHSG SAE#	DIM A	DIM B
#1 & #1/2	27.0	19.5
#0 & #00	28.25	20.75
#0 (DEEP)	30.5	23.0



$\varnothing 1.06$
 TYP (2)
 FOR GEARBOX
 MOUNTING

CONTACT COTTA FOR OTHER
 OUTPUT ORIENTATIONS
 (3, 9, OR 12 O'CLOCK)



DO NOT USE DIMENSIONS ON THIS DRAWING FOR
 INSTALLATIONS, USE CERTIFIED PRINT PROVIDED
 WITH ORDERS.